



## 90° Glass Connector, with Square Ends

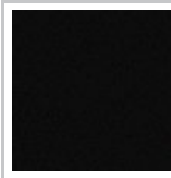
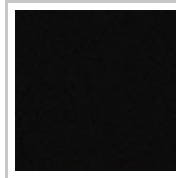
### Safety Glass Thickness

10 to 12 mm

12 to 15 mm

16.76 to 21.52 mm

### Finish



### Width

24 mm

34 mm

40 mm

### Length

65 mm

82 mm

88 mm

## DESCRIPTION

### Corner connector for glass mounting

Fixed bracket to connect two glass panels in a corner.  
Forms a 90° right angle.

## ADVANTAGES AND BENEFITS

Provides a clear and open view free of visual obstructions. Suitable for various glass types and thicknesses

## AVAILABLE PRODUCTS

Product #	Safety Glass Thickness	Finish	Width	Length
<b>SSPFEB90169</b>	10 to 12 mm	Black Stainless Steel	24 mm	65 mm
<b>SSPFEB90GB</b>	10 to 12 mm	Graphite Black	24 mm	65 mm
<b>SSPFEB90MB</b>	10 to 12 mm	Matte Black	24 mm	65 mm
<b>SSPFEB90900</b>	10 to 12 mm	Matte Black	24 mm	65 mm
<b>SSPFEB90S</b>	10 to 12 mm	Satin Stainless Steel	24 mm	65 mm
<b>SSPFEB90170</b>	10 to 12 mm	Stainless Steel	24 mm	65 mm
<b>SSPFEB901</b>	12 to 15 mm	Satin Stainless Steel	34 mm	82 mm
<b>SSPFEB901170</b>	12 to 15 mm	Stainless Steel	34 mm	82 mm
<b>SSPFEB902</b>	16.76 to 21.52 mm	Satin Stainless Steel	40 mm	88 mm
<b>SSPFEB902170</b>	16.76 to 21.52 mm	Stainless Steel	40 mm	88 mm

## TECHNICAL SPECIFICATIONS

Type of Mounting	Glass Mount
Height	25 mm
Material	Stainless Steel: Duplex 2205
Glass Drilling	Not Required
Recommended Location Usage	Interior, Exterior, Coastal
Category	Glass Connectors

## APPLICATION

Fits perfectly with glass railing projects such as staircases and balusters.

## IMPORTANT INFORMATION

For safety purposes, use tempered glass. This illustration is provided for visual reference only. Actual product may vary. The manufacturer reserves the right to change product and information without notice. Always follow the instructions inside the package. Installation must always be done by qualified personnel.

## DISCLAIMER

The preceding information, as well as any technical recommendation given in writing or verbally, whether based on tests or not, is provided to the best of our knowledge. Recommendations are non-binding and do not diminish your responsibility for determining the correctness of these recommendations and the suitability of the product for your particular purpose. The application, use or processing of our products, as well as the execution of projects based on our technical recommendations are beyond our control and therefore exclusively your responsibility. Sales of our products are subject to our most recent General Sales and Delivery Conditions. Please note that Richelieu will not accept any returns or claims for unpackaged products.

## PRODUCT PHOTOS

